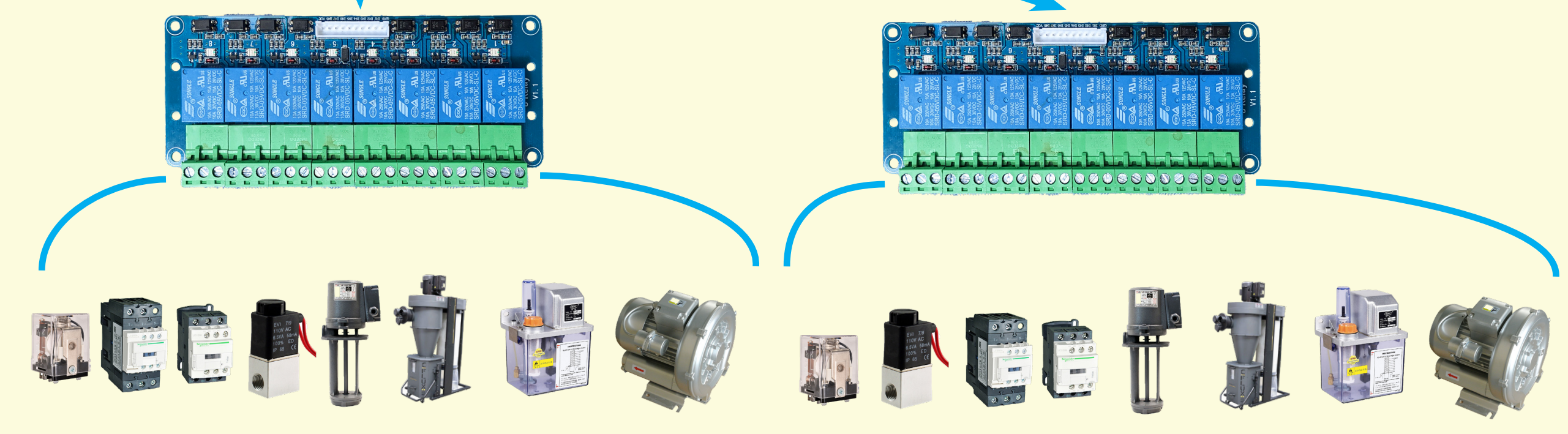
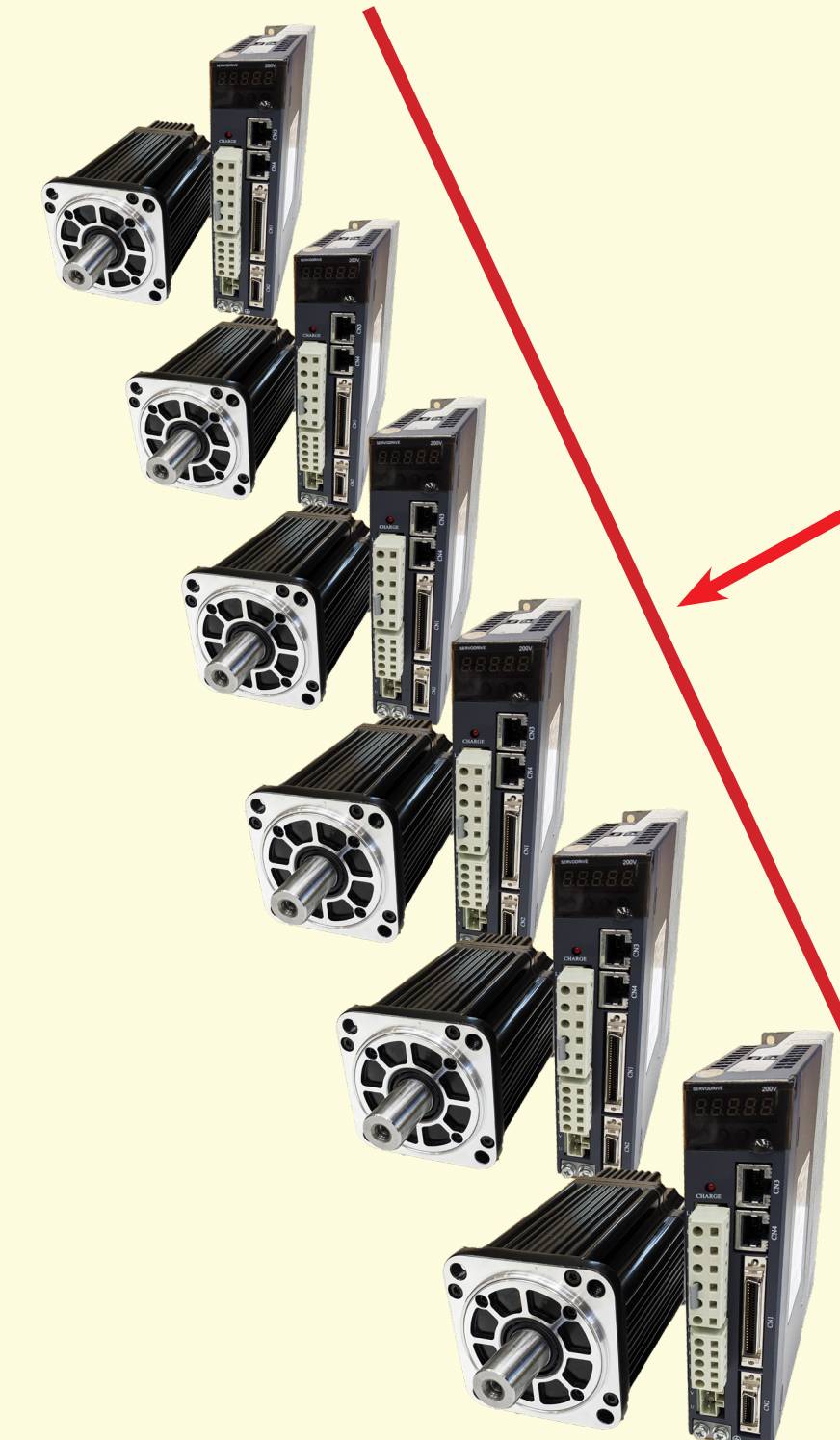
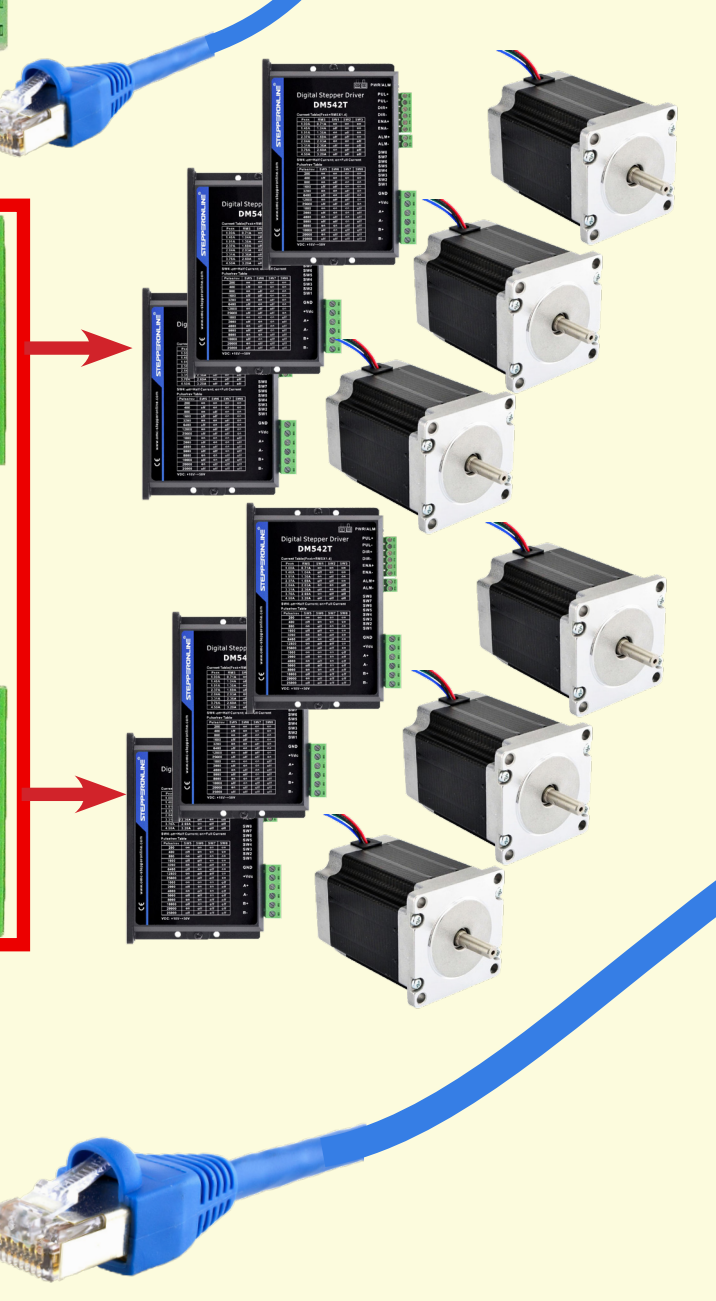
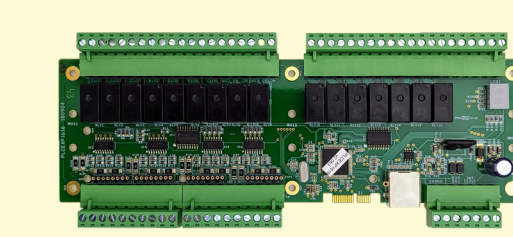



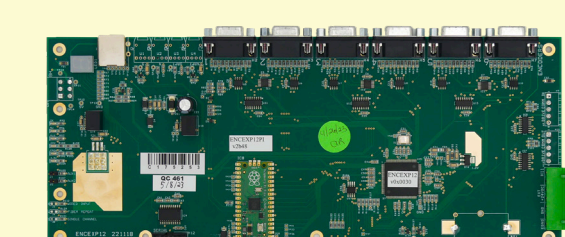
Optional Expansion

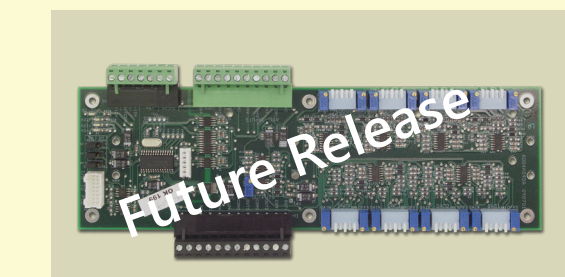


Optional Expansion Boards

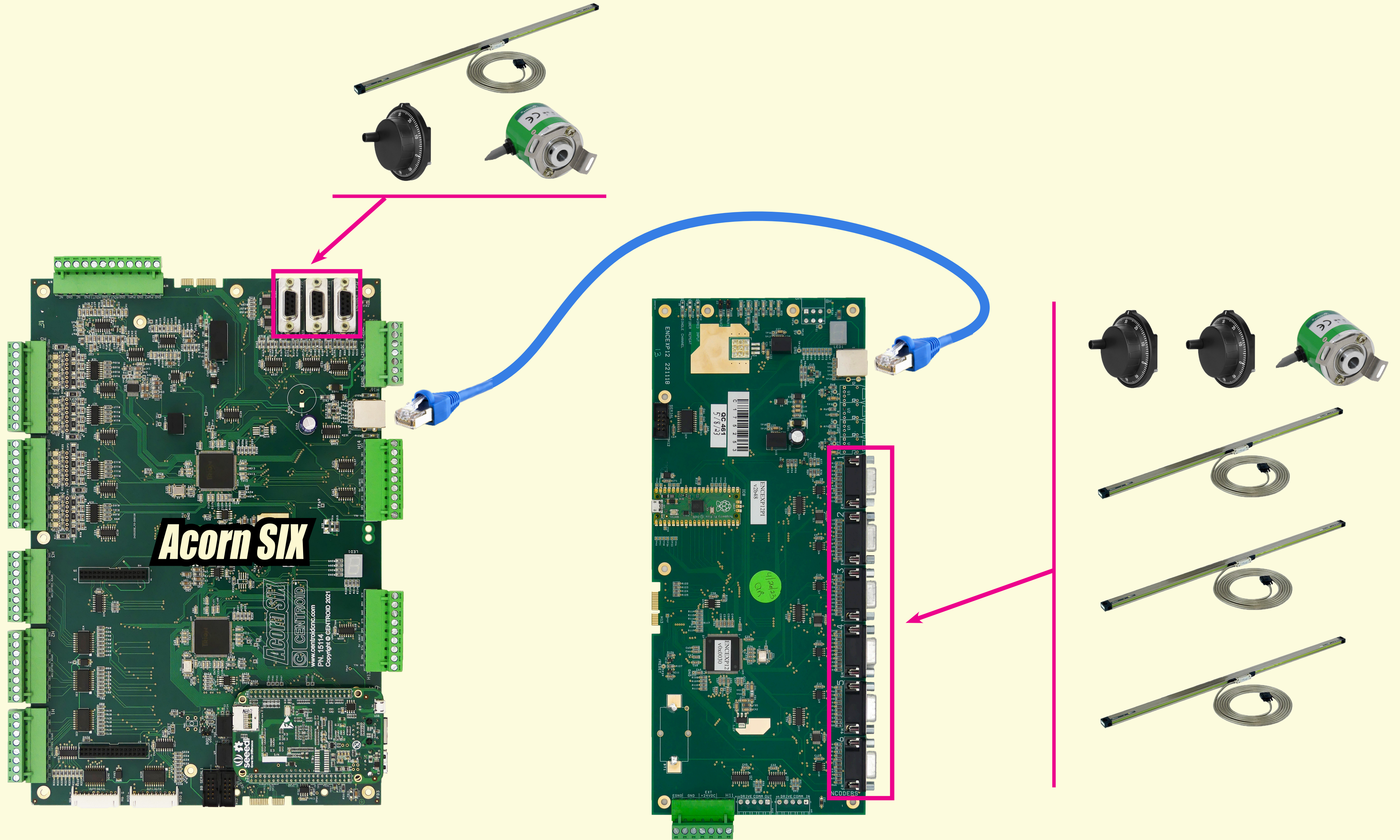
- 

Additional I/O up to 96 inputs and outputs total
PLCEXP1616
Part # 14575
- 

Hard Operators Control Panel.
Use three different way:
Console mount, Panel Mount, or
Corded Hand Held
Part # 14612
- 

Additional Encoder ports
Add six more
Scales, MPG's, Encoders
Part #15330
- 

Future Release
Additional Analog I/O
Add four analog outputs
and four analog inputs





Centroid "AcornSix" Step and Direction CNC Controller kit: a 6-axis CNC control with built-in motion control CPU. A reliable, feature packed, high performance, industrial quality CNC control. Acorn utilizes an integrated 1Ghz ARM Cortex A8 Motion Control CPU and communicates with CNCPC via a fast and reliable Ethernet connection. The Acorn CNC control board controls a wide variety of axis motors and drives with industry standard step and direction command signal. Perfect for many types of machine tools such as: CNC milling machines, a wide variety of CNC Routers, CNC lathes to CNC Lasers, and other specialty applications. Compatible with small to large axis motors of all types and can be used with most any AC brushless servo motor drive packages such as: DMM, Delta, Estun, Teco, Teknic, Yaskawa and others. Any drive that accepts step and direction commands. Most all stepper motor drives are compatible with the Acorn board such as the popular Gecko and Leadshine stepper drives. Acorn runs on Centroid's proven industrial quality CNC control software.

Future Daughter Board adds:
 - Quadrature Step and Direction output for all six axes
 - Four Additional SCOUT Expansion Ports

Plug and Play
 Relay Board Connectors
 2 x 8 for 16 Relay Outputs
 Outputs Expandable to 96 in total

Fast On Board CNC CPU
 w/ Automatic Firmware installation

